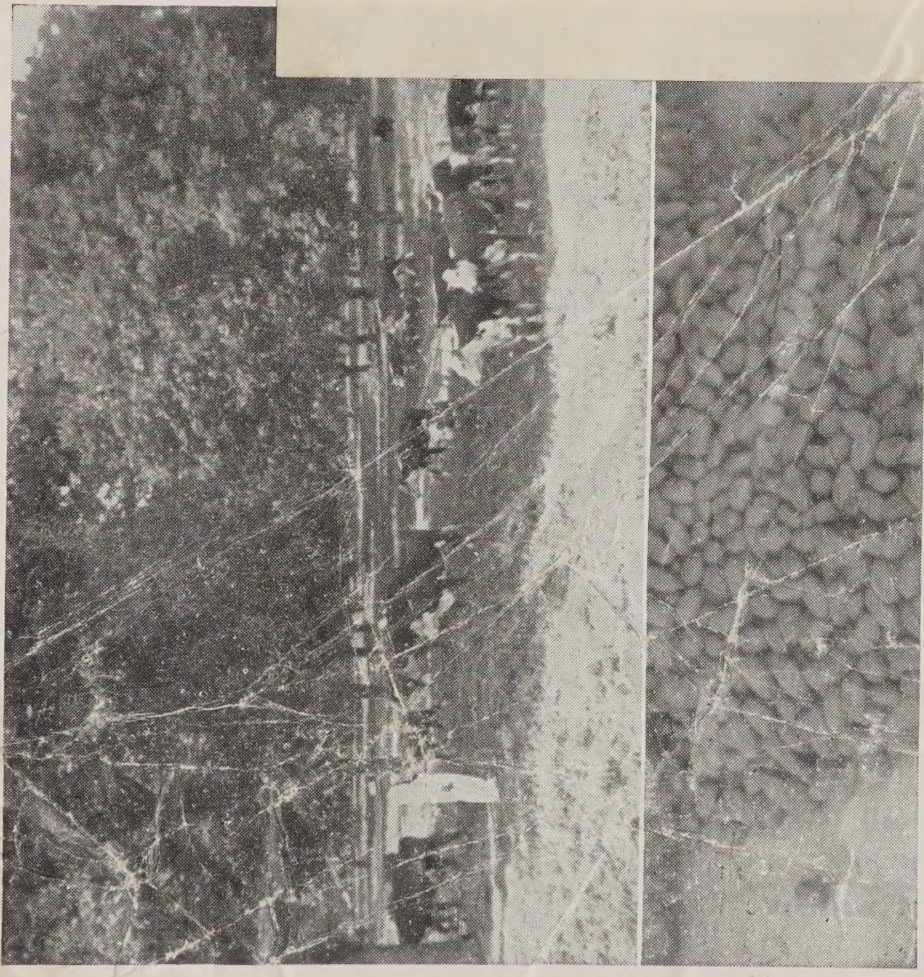


Historic, Archive Document

Do not assume content reflects current scientific knowledge, policies, or practices.

62.45 Index

NEW CATALOG 1949-1950



BASS PECAN COMPANY

The World's largest growers of Papershell pecan trees.

LUMBERTON, MISSISSIPPI

LIBRARY
RECEIVED
★ JAN 31 1950 ★
U. S. Department of Agriculture

Sec. 562, P. L. & R.
U. S. POSTAGE
1c Paid
LUMBERTON, MISS.
Permit No. 1

U. S. DEPARTMENT OF AGRICULTURE

LIBRARY

WASHINGTON 25, D. C.

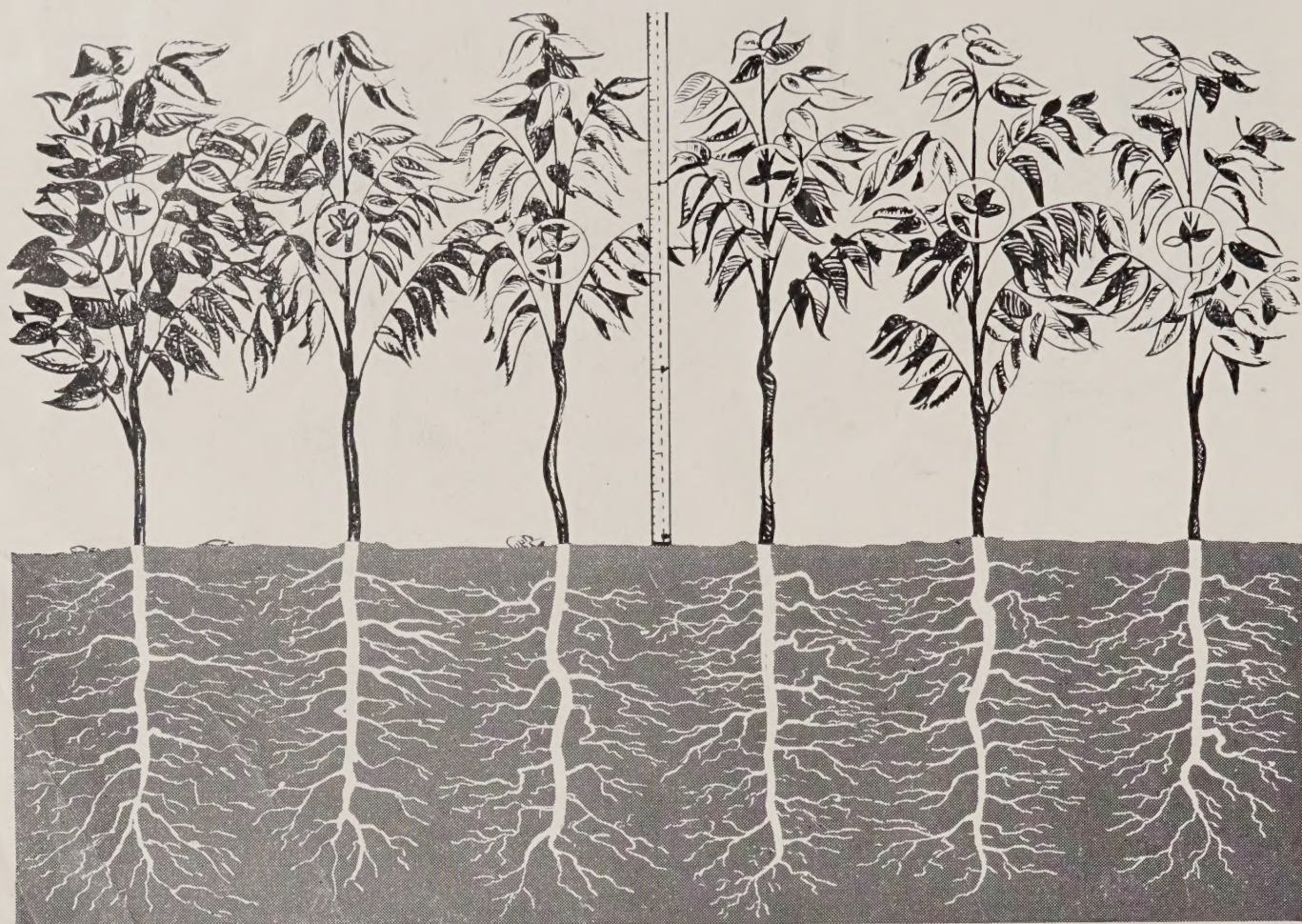
OFFICIAL BUSINESS

PRINTED MATTER

PENALTY FOR PRIVATE USE TO AVOID
PAYMENT OF POSTAGE, \$300

GPO

Library, U. S. Dept. of Agriculture
WASHINGTON 25, D. C.



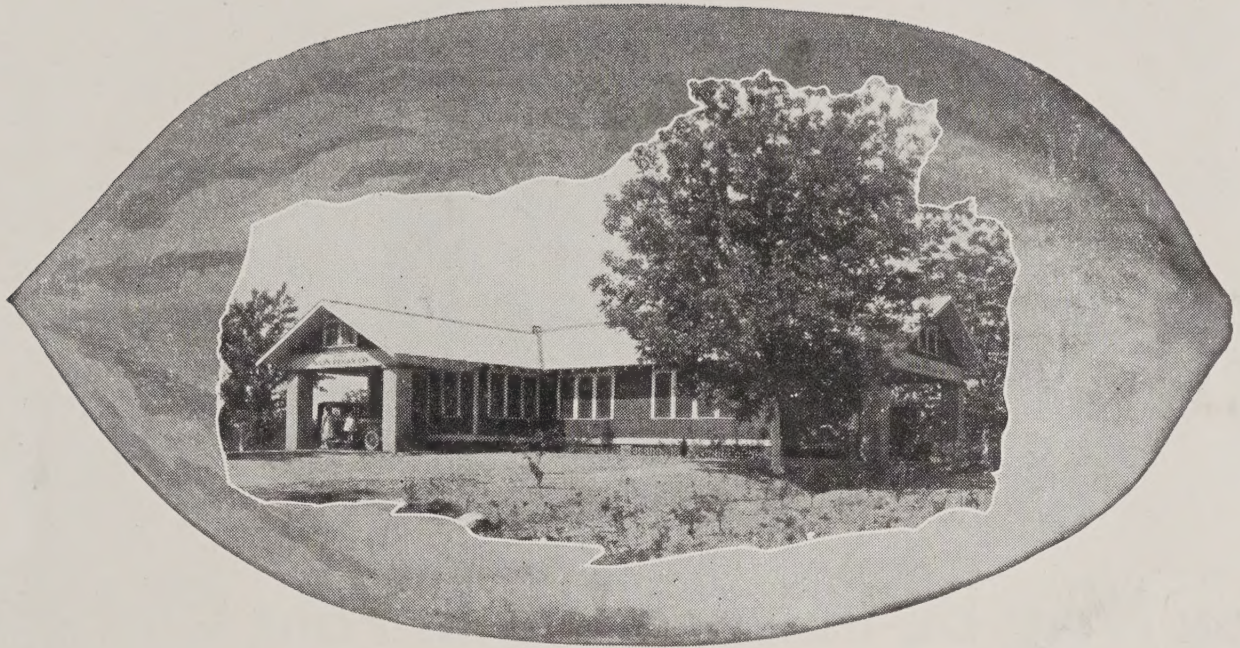
A drawing from a kodak picture showing our Bred-up Pecan trees bearing before they are three feet high.

Young Trees Bear in the Nursery Row

THOUSANDS—not hundreds—of our pecan trees bloom and bear in the nursery row. The drawing above shows six little trees dug up in our nursery, retouched to show root systems and nuts more plainly. You can see life and quality of the highest sort in these young, healthy pecan trees. We are proud of them. Plant them, and we are sure you will never regret it.

Bass Pecan Trees Are Easy to Grow

OUR healthy, vigorous, well rooted, and highly Bred-Up papershell pecan trees are living, growing and bearing fine crops of pecan nuts in almost every town and community of the South. We are glad to know that thousands of men, women, and children all through the South are happy and busy each Fall gathering fine papershell pecan nuts from trees we grew here at Lumberton and encouraged them to plant. Our pecan trees bear early because they have been bred-up from selected early bearing parent trees. Here at Lumberton we have more fine bearing pecan trees to select our buds and grafts from than any other nursery in the world. More Bass grown pecan trees are now living, growing, and bearing profitable crops than any other brand. It always pays to buy the best — then you always have the best. These fine trees will live well, grow fast and bear big choice pecans that you will always enjoy.



"Our Office Building in Pecan Trees"

The Bass Pecan Company

Is One of the World's Largest and Oldest Pecan Nurseries

THIS is our 41st Anniversary Catalog Edition, as our first catalog was published in the Spring of 1909. However, our company is considerably older than that, dating back to before the turn of the century to our interest in pecans and growing pecan trees.

In 1909, when we printed our first catalog, we wanted to tell the whole world about the profit and pleasure to be had out of growing pecan trees. In 1949 and 1950 we still want to tell the world the same thing: *Pecan trees are a joy to grow, and a source of profit as well as pleasure.*

In the years since 1900 we have grown from a very small nursery to the position where we can say that we are the **LARGEST GROWERS OF PECAN TREES IN THE WORLD!** And we are confident there are more BASS-grown pecan trees living, growing, and bearing heavy crops than of any other grower in the world! We know you will want to plant pecan trees from the largest growers, from the Bass Pecan Company, now in its third generation with a fourth coming along; always interested in growing the finest pecan trees and nursery stock that money can buy!

Our sole business, which has been our work throughout the last 40-odd years, is the growing and selling of pecan trees. It requires our attention 365 days a year. This is not a company which buys trees each year for re-sale, or sends out agents to peddle trees; but a large organization operating throughout the year, and selling our own trees direct to the customer for cash only. Our operations cover over 20,000 acres of land in Lamar, Pearl River and Forrest Counties, Mississippi, with 2,000 acres in pecan orchards and nurseries, and the rest well reforested with several million pine trees. While we are mainly interested in growing pecan trees, growing trees of all kinds interests us, and we get our greatest pleasure from this.

BE sure you plant BASS-grown trees, which have been recognized for many years as the finest pecan trees in the world, as well as the earliest and heaviest bearing.



You May Be Independent In Your Old Age

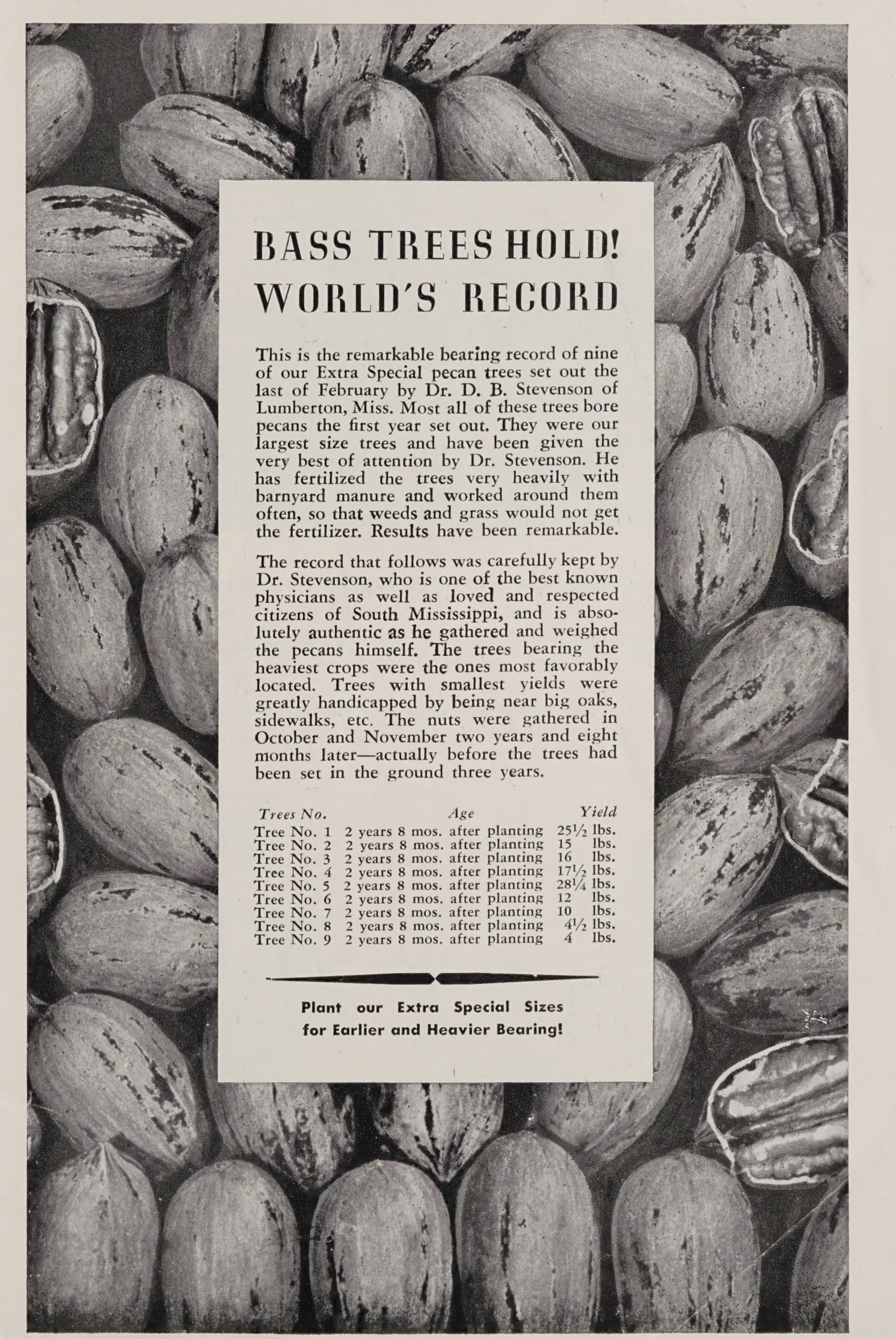
HERE is a picture of Father and Mother Bass taken in their declining years. I. E. Bass was the founder of this business, but he was 58 years old when he planted his first papershell pecans. Father Bass, like thousands of other men, had worked hard all his life, made sacrifices, and saved practically nothing. He was past middle age, facing old age, financial embarrassment, and possibly would have been dependent on his family.

But in spite of the fact that friends and neighbors predicted he would never live to see his trees support him, he succeeded, through pecans, was able to carry on this business, send eight children to college, and retire with absolute independence.

Father Bass has now been gone for several years, but Mother Bass at 94 years old is still healthy, happy, and enjoying not only nice profits from these trees, but the shade, the beauty and the birds that flit in and out of the branches, and sing so loudly throughout the day. Pecan trees are truly a living monument to Father Bass.



Resting and Relaxing Under a Beautiful Pecan Tree.



BASS TREES HOLD! WORLD'S RECORD

This is the remarkable bearing record of nine of our Extra Special pecan trees set out the last of February by Dr. D. B. Stevenson of Lumberton, Miss. Most all of these trees bore pecans the first year set out. They were our largest size trees and have been given the very best of attention by Dr. Stevenson. He has fertilized the trees very heavily with barnyard manure and worked around them often, so that weeds and grass would not get the fertilizer. Results have been remarkable.

The record that follows was carefully kept by Dr. Stevenson, who is one of the best known physicians as well as loved and respected citizens of South Mississippi, and is absolutely authentic as he gathered and weighed the pecans himself. The trees bearing the heaviest crops were the ones most favorably located. Trees with smallest yields were greatly handicapped by being near big oaks, sidewalks, etc. The nuts were gathered in October and November two years and eight months later—actually before the trees had been set in the ground three years.

<i>Trees No.</i>	<i>Age</i>	<i>Yield</i>
Tree No. 1	2 years 8 mos. after planting	25½ lbs.
Tree No. 2	2 years 8 mos. after planting	15 lbs.
Tree No. 3	2 years 8 mos. after planting	16 lbs.
Tree No. 4	2 years 8 mos. after planting	17½ lbs.
Tree No. 5	2 years 8 mos. after planting	28¼ lbs.
Tree No. 6	2 years 8 mos. after planting	12 lbs.
Tree No. 7	2 years 8 mos. after planting	10 lbs.
Tree No. 8	2 years 8 mos. after planting	4½ lbs.
Tree No. 9	2 years 8 mos. after planting	4 lbs.

**Plant our Extra Special Sizes
for Earlier and Heavier Bearing!**



COMPARE these pictures of our house that pecans built. In one, you see plenty of sun and bareness, and in the other, shade, beauty and contentment, together with a nice income each year from pecan nuts. Every home should have pecan trees around it for beauty, shade and profit.

Millions of dollars are being lost each year by not planting pecan trees for shade and ornament instead of oaks or some other non-bearing tree.





Pecans and Cattle Mean Shade, Beauty and Profit.

Pecan Trees and Cattle

A Great Combination for Immediate and Future Income

OUR own orchards and nurseries make excellent proving grounds. First, by experiment, and then by actual practice we have learned that pecans and cattle make a most profitable combination. The land between the rows of trees is thus utilized, and as the livestock graze, keeping down the grass and weeds, they fertilize that land. We have saved thousands of dollars on fertilizer alone through this method. Also we do not need extra grazing land, nor do we have to tie up land solely for pasture, keeping it otherwise idle. Good clover will produce good milk and good meat and thus bring in an immediate income while your pecan trees are growing, and as they bear nuts there will be that double income.

Nature's Insurance That Pays Dividends from the Very Beginning!

WHEN you plant pecan trees and plan to give them the attention they deserve, you are really taking out an insurance Policy with Nature! This policy will start maturing in just a few years time and provide a regular income for you. It will prove to be a trust fund, furnishing you a steady income whereby you may retire and become completely independent.

The only "premium" to be paid, after planting the finest of trees is to keep the ground properly cultivated, and by planting crops between the rows, or clover for cattle, you will be paying that premium in an easy way, the income from which crop or cattle will produce immediate revenue.

From the very beginning, Nature starts paying dividends, for your land increases in value as soon as trees are planted, and the older they become the greater its value. Nature is kind to those who have the foresight to look ahead — to plan — and to plant!



I. H. Bass in Our Pecan Nursery.

Pecan Trees from the World's Finest Nursery Stock

YOU have already seen how amazing our fine pecan trees are in their early rate of production. Above is a photograph of our choice nursery stock, taken in one of our nurseries. This is a typical picture of these select young trees; and here in our nurseries there are rows on rows of trees just like these . . . fine, healthy young trees, very vigorous and thrifty, beautiful with rich green foliage, carefully grown especially for shipment to our customers.

You will notice in the picture how the trees are all healthy and thrifty and strong-looking; and the size of the trees is phenomenal! Buy BASS trees and get full size healthy trees.

See the beautiful rich green color of the leaves on these fine young pecan trees. It is a pity you cannot yourself compare our fine healthy trees with so many of the yellow leaved, sickly looking pecan trees offered by so many nurserymen. Can't you just imagine your own orchard of BASS trees? In just a very few years the wonderful young trees pictured above will be large heavy-bearing trees in orchards throughout the South, given the proper care and attention. Now is the time to plant!

It Pays To Plant Only the Finest Trees

FOR years we have made the offer to anyone to inspect pecan nurseries anywhere in the world and ours, and if they did not find ours to have more and finer pecan trees than they found at any other single nursery in the world, we would pay the entire cost of the inspection trip!

Our Trees Have The Finest Root Systems

NO pecan trees have finer root systems than the trees we grow here at Lumberton. Our soil is ideal for the development of a full root system, thrifty, vigorous and healthy. We have had thousands of visitors during the past 40 years, and without an exception they have said they saw the finest pecan trees growing here that they had ever seen.

Our Trees Are Packed the Best

YOU can buy fine pecan trees, but if they are not dug and packed well for shipment, you have nothing when you get them, for they will not live and grow well for you. We dig our trees by hand, with specially designed and manufactured shovels, and we go deeper and get finer roots than any nursery we know of.

Read Testimonials on the back inside-cover (Page 23). On this page there is a picture of a bale of pecan trees ready for shipment; trees are packed carefully and thoroughly so they will not dry out or be bruised or broken during shipment. We have used many different materials in testing the finest ways to get our choice Bred-Up trees to the customer in the best condition, and the way we pack our trees today has proved itself best for the customer.

Call For Trees As Soon As They Arrive

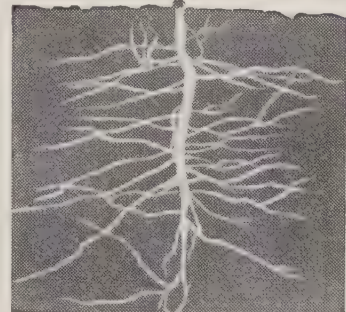
WE send a notice on the day trees are shipped, so the customer may expect their arrival. When trees arrive, inspect them before accepting the shipment, to be sure that none was broken or damaged in transit. If any tree is damaged, have the postman or the expressman make the proper notation on the receipt you sign. Send us the slip showing the damage, and we can file claim and send you a duplicate tree. We cannot file claim unless you send us the receipt signed by the agent, showing damage to the shipment.



Trees Ready for
Shipment



We measure our trees from ground up.
You pay only for this!



You do not pay for
the roots.

A Bass bred-up tree less than three feet high, already bearing pecans.



\$100,000 Would Be a Low Value on This Bass Pecan Orchard.

There's Always A Market For Pecans!

THE most popular nuts are pecans. Because growers realize that the market has hardly been scratched, cooperative associations have been formed to further their sale. Pecans have sold on their own merits because of their delightful taste and flavor, and food value. The immediate consumption is enormous. Confectioners, Hullers, and Salters use them by the carload. Fruit cakes, so popular in the Fall, require tons. Bakeries use them all year round. Cracking companies cannot secure enough nuts. Chain and grocery stores sell them.

A Heavy Bearing Bass Pecan Orchard

ABOVE you see one of our pecan orchards here at Lumberton making money with White Dutch, Yellow Hop, Giant and Crimson Clover, as well as other soil building crops in our pecan groves. Over \$20,000 profit was made this past fall on yearlings grazing these cover crops. While the yearlings were making a fine profit, the orchard was being made richer with these soil building legumes. It is an easy way to make money. A very heavy crop of pecans is now on our trees after having given us a nice winter grazing crop—you might say, free.

World's Largest Cluster of Stuart Pecans

THIS cluster of nuts is, in our opinion, the world's largest cluster of Stuart pecans. We have never been able to learn of a larger cluster of this variety.

This bunch of nuts was grown from one of our trees, sold to a customer at Purvis, Miss., the county seat of Lamar county.

There were sixteen nuts in this cluster. Compare the size of the bunch to the hand holding them.



16 Stuart Nuts.

A Pecan Grove Is an Asset to Any Farm

EVERY farm should have a pecan grove to serve as insurance for later on and provide a "reserve" for independence and old age. Or certainly each farm should have at least a few trees. The nuts will furnish food for the family and friends and also be a fine cash crop and bring in some ready money. If these trees are planted near the house they will insure lots of shade and beautify the grounds, also attract the birds. So if you don't want to grow pecans in a big way, even a few trees on your place will prove to be a valuable asset.



\$100.00 Worth of Pecans
Each Year From This
Bass Grown Tree.

This Is Good Farm Logic

PECAN trees will assure you a good income. Should you have a short crop you will be out virtually nothing, for the trees are constantly growing and will produce heavier the following year so one doesn't lose in the end. Trees need occasional rest periods anyway. It would be much better if we could control their production—and then heavier crops would be had the next season.

Each year your land becomes more valuable with pecans, whereby with other crops you will have been depleting the soil!



Stuart Pecans—First Choice of America

THE Stuart is our first choice, and is the most popular of all the improved varieties of pecans. This variety has been more extensively planted than any other, and large plantings of this variety are being made throughout the South. The trees are vigorous, bear regularly, and resist scab. They are early and heavy bearers. The nuts are large and well-filled, the kernels are plump with a meat content of 49% to 50%, and of excellent flavor. The nut is shaped nicely, and fills well.

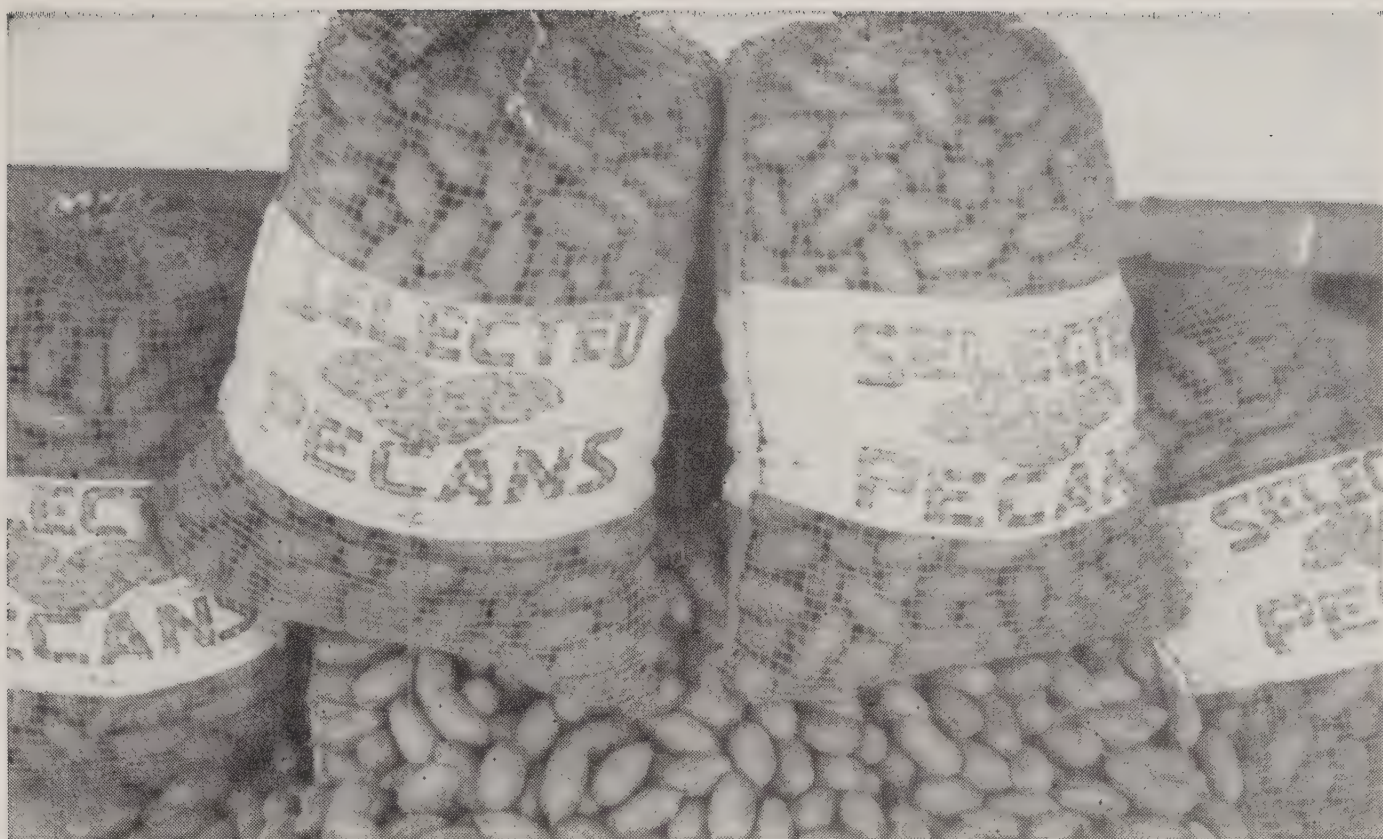
These nuts are easiest to grow, sell well on the market, and bring a high market price.

The major portion of our orchards is in Stuart trees, and in recent years we have topworked many other varieties, less satisfactory, over to the Stuart variety.

We recommend the BASS Bred-Up Stuart pecan trees as the most profitable and satisfactory of the pecan trees. We have an unusually large stock of these fine trees this season, and believe it would pay you to plant these in preference to others.

Pecan Trees Have No Age Limit

Just to show how long pecan trees will live, grow, and produce, and further to prove the wisdom and foresight of George Washington, the Father of Our Country, in the year 1785 or thereabouts, President Washington planted pecan trees which are still living, in fine condition, and bearing. Washington was indeed looking to the far distant future, and leaving behind a living and growing memorial, producing for the generations to come later.



Mississippi Giant Papershell Pecans

THE Mississippi Giant pecan is no doubt the largest papershell pecan in the world. F. A. Mahan, of Monticello, Florida, is said to have paid \$5,000.00 for the parent tree at Kosciusko, Miss. The trees are sold under many different names, such as Mississippi Giant, Florida Giant, Mehan, Mayhan, Mayhand, Mahan, etc. In many sections it is doing as well as any of the other varieties, and because of the size of the nuts, and their paper-thin shells, this variety brings a premium on the retail markets. This new variety is very rapid-growing, with large and beautiful green foliage. The shell of the pecan is thin, easily crushed in one's hands, and the meat is large, easily extracted whole, with a fine rich nutty flavor that is very distinctive. It is one of the earliest and heaviest producers of all the pecan varieties. Under other names it is often sold for many times our price by other nurseries.

Why We Sell Only Two Varieties of Pecans

The two varieties of pecan trees which we now offer are, to our mind and experience, the very finest pecan trees. They are the ones which grow off best, bear earliest and heaviest, and produce the finest pecans. There are any number of other varieties which we grow here in our 2,000 acres of orchards, such as Success, Schley, Lewis, Nelson, Pabst, Moneymaker, Frotscher's Eggshell, Bass Papershell, Van Deman, Natchez, Delmas, Forkett, Dependable, Davis, Hale, Burkett, Big Z, Hollis, President, Squirrel's Delight, Climax, Longfellow, Texas Prolific, Oliver, Russell, Kincade, and some as yet unnamed. But of them all, after extensive tests, we feel that we offer the two finest varieties of all, and the ones you will want to grow. Read testimonials on page 23 to see how the Stuart and Mississippi Giant varieties are regarded by our customers.

Planting Pecan Trees

There are two questions about planting pecan trees more frequently asked than any other: first, how many trees to plant to the acre, and second, what kind of soil in which to plant them?

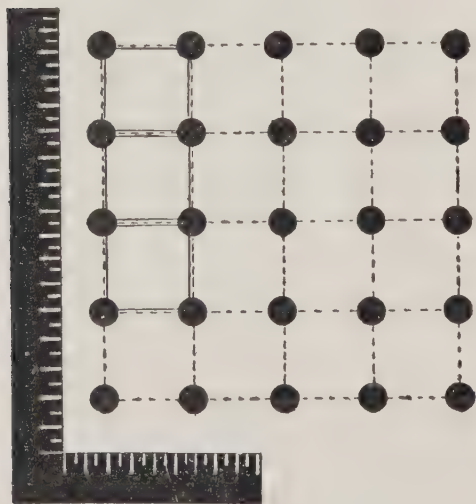
On land of fair fertility, trees can be planted every 50 feet, although we would recommend planting 60 feet apart. If the ground is very rich, plant 70 to 80 feet apart. But, for the average, figure on 60 feet apart—12 trees to the acre. Please refer to the Square and Triangle methods illustrated below. You get more trees to the acre by planting the Triangle method—14 instead of 12.

Land which will grow hickory or oak trees usually grows pecan trees well. It has been well said that any land which will grow cotton will grow pecans. Well-drained land is needed for best results. Practically all lands in the Southern states will grow pecans.



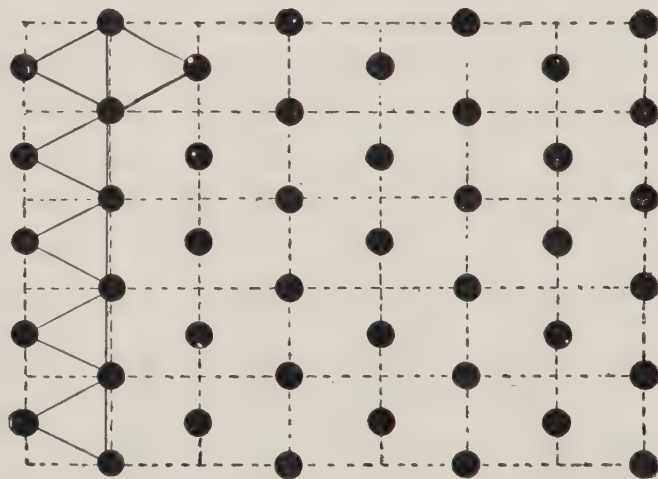
The earlier in the fall season pecan trees are planted the better will be your prospects for them living, the more vigorous they will grow off, and the earlier they will begin to bear. Set out pecan trees as early as practicable after the leaves fall, in November, December, January, February, or March. *Even if you cannot plant your trees until January or later, book your order early so we may reserve some of our finest trees for you.*

Use a planting board in setting your trees. This is easily made by taking a plank or board about six feet long, and cutting a V-shaped groove in the center. Drive stakes in the ground where trees are to be planted; then place your planting board so that the groove is around one of the stakes. Place small sticks or pegs at each end of the planting board, in the ground; this gives you marks to come back to. Dig your hole, replace your planting board between the two pegs you set; and now you have the groove in the exact place where you want your tree to be. Put your tree into the hole, center it with the planting board, tamp the soil down to hold it there. If you do not use a planting board it is hard to get the trees in line again after holes are dug, even if they were lined up exactly right to begin with.



SQUARE METHOD

To plant trees by the Square Method, take an ordinary L-Square and place on the ground in order to get your lines true. Sight and place a stake 60 feet apart on each line until you reach the ends of the field, or whatever distance apart you are planting your trees. Then stake off on parallel lines at every 60 feet and plant trees at each stake. Twelve trees are planted to the acre at 60 feet apart.



TRIANGLE METHOD

To plant trees equidistant in all directions, use the triangle method. To get a true equilateral triangle drive a stake in the corner of the field. Then, with L-Square find the stakes along the outside lines as in square method. To get the proper distance inward attach wires to two adjacent outside stakes, the wires 60 feet long. Make arcs with these two wires, and where they meet, properly taut, drive stake for tree. Work from that stake until field is covered. Fourteen trees will be planted to the acre.

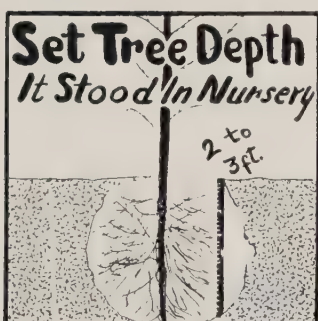
Directions for Planting



Protect the Roots

Never allow the roots of the trees to become dry or exposed to the atmosphere for any length of time from the time they reach you until they are set in the ground. Wet the roots in the bundle just as soon as you can, and if not ready to set out at once, dig a hole and put the roots in and cover up well. Place in a shady place if possible.

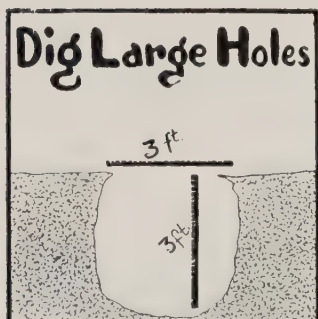
Set your trees at once upon arrival, or heel-in promptly as above.



Plant as Deep as in the Nursery

When you set out your pecan trees, plant them about the same depth they stood in the nursery. Fill in the hole with the best top-soil, packing the dirt well around the roots, especially the tap root. Keep the roots of the tree straight in their natural position, and do not bend them down by the tree.

Dig Large Holes — Protect the Roots



Have a large hole for your tree. Two feet wide and two feet deep is normally large enough for pecan trees; and this hole can be edged larger as trees are planted, if necessary for the larger size trees. Holes about 12 inches across, and one to two feet deep usually are large enough for pear trees.

Fertilize Properly

When trees are to be planted on soil rather poor in fertility, use a good top-soil in the hole when filling it. About the best fertilizer after the tree is planted is manure scattered around the tree. **DO NOT BANK IT AROUND THE TREE**, but scatter it around for three feet or so. And if a commercial fertilizer is used, take it and scatter it around on the earth around the tree, and then work it lightly into the soil. Do not let any fertilizer of any sort touch the roots, for many trees are killed by strong fertilizers burning the roots before the roots get started growing in the new soil. Fertilizer placed on top of the soil will have its substance taken down by rains. Put fertilizer around your trees in late winter, if possible, so that the trees will get a fine growth in the spring. When the trees are old enough to bear, use potash in some form—wood ashes will do.



If the Soil is Dry

If the soil is dry when the trees are planted, it is a good idea to pour a bucketful of water to each tree when the hole is about three-fourths filled, and after the water soaks in, fill the hole completely with dirt.

During hot spells during the summer, with dry weather, water the trees slightly. One bucketful per tree is usually sufficient. Make a basin-like hole at the base of the tree. Pour water, and as soon as it is soaked in good, fill the hole completely with dry dirt. This holds the moisture in, and also keeps the ground from baking. If you cannot pull dry dirt back to keep the soil from baking, DO NOT Water At All. Water poured on top of the ground and left this way does more harm than good, as it will cause the tree to scald.

Cultivate the Soil

Keep the ground around the trees cultivated thoroughly all during the summer. Never let grass or weeds grow up around your trees, as they take nourishment and moisture from the soil which will benefit your pecan trees. Keep the ground dug up and soft at all times. Our own experience has taught us that no tree responds to care and cultivation better than the papershell pecan, and that frequent shallow cultivation is best.

Care of Young Trees

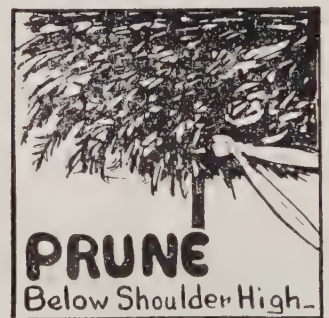
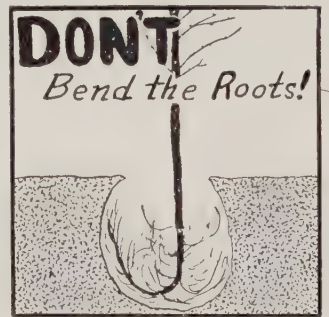
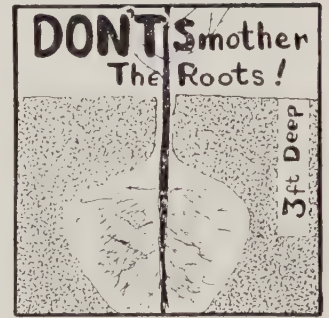
No pruning is necessary after you once get the trees branching high enough. The larger trees we sell will branch high enough anyway, but the smaller trees have to have sprouts cut off occasionally that come out on the body of the trees, until the branches get high enough. This may be done at any time, either in summer or winter. We do not let our own trees branch out any lower than shoulder high, or five to six feet above ground. They look better and you can work around them where they are not allowed to head too low.

BASS Trees Come Ready to Plant

We endeavor at all times to send out properly pruned trees, just the kind which we plant ourselves, leaving the planter nothing to do but just set them out. The taller grades of trees need to be top-trimmed, as it balances the top against the unavoidable loss of some of the roots when the tree is transplanted. Proper pruning insures the tree growing well. *Our prices are made on the height of the trees when dug. When properly top-trimmed, the height is often somewhat reduced. Therefore if the height of the trimmed tree when received is less than the catalog height, this is the explanation.* We measure our trees from the ground up, not from the tip of the tap root as many nurserymen do; and so our 3-4 ft. size trees are often as large as others' 5-6 ft. size trees—we don't charge for the roots.

Special Notice About Fertilizer

Recent experiments in our own orchards have shown us that one pound of Nitrate of Soda or Sulphate of Ammonia for each year the tree has been planted will be of great benefit and cause your trees to grow very fast. Merely spread it around the trees two or three feet from the trunk, and hoe or dig it in well. This can be done at any time from the first of April to the last of June, usually the earlier the better.



You can prosper with Bass BLIGHT-PROOF Pineapple Sand Pears

ANOTHER profitable fruit to grow, and yet one which has not been sufficiently publicized to be more in demand, is the Pineapple Sand Pears. We first grew Pineapple Sand Pears for our own use, and finding them of such prolific growth, such fine fruit, such a ready market and such a splendid profit, we decided to pass on our experience to our customers and grow these trees for them. 40 to 75 bushels per year from many of the older trees in our section is nothing unusual and some orchards yield over 1,000 bushels to the acre. One orchardist produced 400 bushels on 2½ acres, one year, and two years later gathered over 3,000 bushels which sold for \$2,520—over \$800 per acre.

Have you ever seen an orchard of pears in bloom? Was there anything more beautiful than these graceful trees in their mantle of white? Even when the blooms and fruit are gone, the trees are ornamental as well as useful and will beautify any home or land along a roadside. They take up but little room and require no cultivation.



Branches of our Blight-Proof Pineapple Pears loaded to capacity.



One of our beautiful Blight-Proof Pineapple Pear orchards in full bloom.

SO WE NOW produce these pear trees for our customers, and have thousands of young, thrifty growing trees ready for shipment. These trees, when mature, will be better than our own old trees, since they have been propagated from our producing trees; thus fine parent stock, and a better start than our own trees had.

The Bass Pineapple Sand Pears grow rapidly—they are extremely hardy. All trees have a well developed root system.

GUARANTEE

The Bass Pineapple Sand Pears are guaranteed not to blight in any section.

Three other fine eating pears are offered this season in what is known locally as the Cox pear, the Cook pear, and the Orient pear. All have never shown any sign of blight. The price is the same as the Pineapple pear.

Finest Peach Trees

WE grow more than 10,000 bushels of peaches each year in our orchards. The three kinds we offer have done best of many kinds tried here.

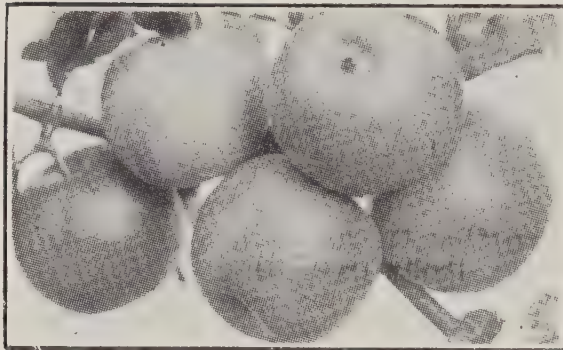
RED HAVEN. The earliest fine peach we know. Very early bearer and fast grower. Fruit is yellow meated under a red skin and a clear seed when fully ripe. This is a real fine new peach and ripens in early June.

HILEY BELLE. Very rapid grower, prolific bearer, with a fresh, firm, excellent creamy white flesh and real peach flavor. Ripens in June. Freestone.

ELBERTA. Large, yellow, with red cheeks; juicy and of good flavor; flesh yellow. Ripens middle of July. This is an excellent shipping variety. Freestone.

Apples

DELICIOUS APPLES. No apple has ever gained the popularity in so many sections of the country as the Golden (Yellow) Delicious and the Red Delicious. The apples are large and beautifully colored, flesh fine grained, crisp, melting, juicy, with delightful aroma and highest quality. Fine keeper and shipper. Tree very hardy, fast grower and heavy bearer. Same price for either kind.



Bass Grapes

GROW your own Grapes for the table or your own grape juice, wine, or jelly.

CONCORD. The most widely grown, most popular of all grapes, for vineyards. Black. Healthy, hardy, vigorous vine, large bunch and berry, and a good yielder. Grows quickly. Our Concord this year are extra fine.

NIAGARA. Leading white grape. Widely planted. Bunch large; handsome, juicy and fine flavor.



Concord Grapes

Bass Figs

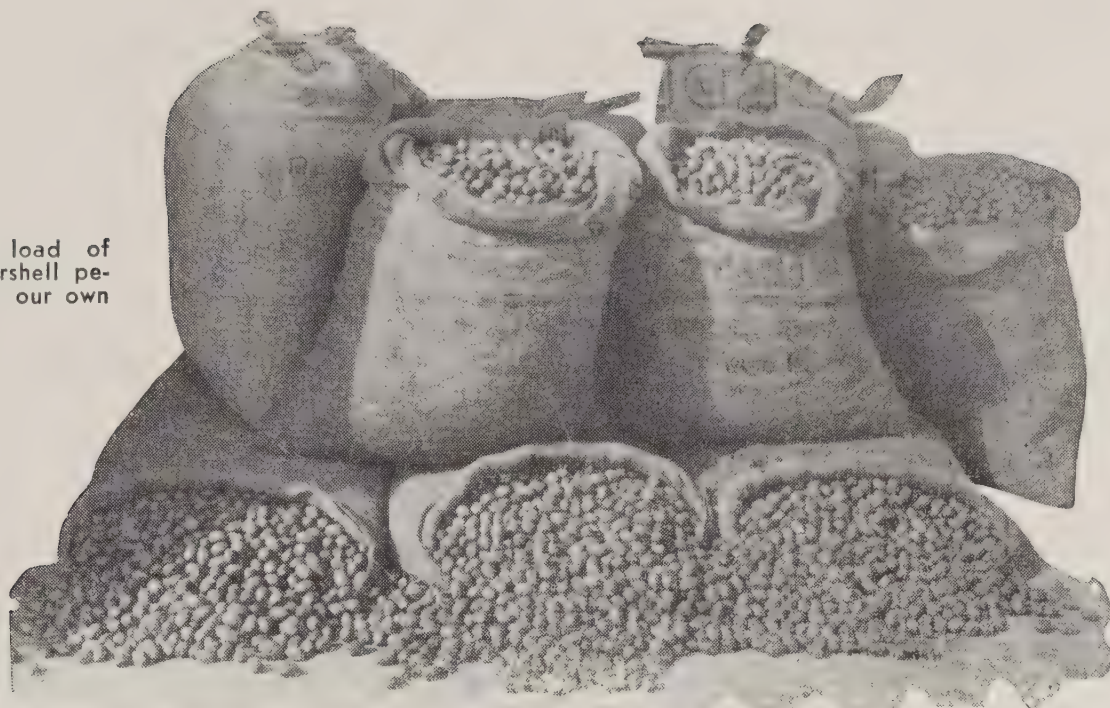
THE fig-canning industry is gradually extending throughout the South. Since several tons of figs can be produced on an acre of ground, it is profitable to give them intensive culture. The fresh fig is quickly finding its way into market, and meeting with ready sale.

Figs require little or no cultivation. Our favorite is the **CELESTE**, one of the hardiest varieties. Very desirable for canning and preserving. Small to medium, pear-shaped, ribbed. Flesh firm, juicy, sweet, excellent quality.

Plums

FINE JAPANESE PLUMS. Burbank, Red June, Abundance and Bruce. All fine varieties. Early and heavy bearers.

A truck load of fine papershell pecans from our own orchards.



THIS YEAR GIVE PECANS

The Perfect Holiday Gift For A More Perfect Holiday Season!

PECANS are the perfect gift. And what pleasure to have a box of tasty papershell pecans arrive from a friend in advance of the Holiday Season, a gift to be cherished and enjoyed throughout all the festive Holidays!

This year we are making a special Holiday Gift offer for those who wish to send us a list of persons to whom to send our fine pecans during November. We shall inclose a special card with your name, and Greetings for the entire Holiday Season, including Thanksgiving and Christmas and New Year's.

Prices for Gifts of Pecans

5 lb. box	\$ 2.50 prepaid in U. S.
10 lb. box	\$ 4.50 prepaid in U. S.
50 lb. sack.....	\$18.75 prepaid in U. S.
100 lb. sack.....	\$35.00 prepaid in U. S.

Quotations will gladly be made on larger orders for our choice selected Papershell Pecans. We can also quote postage and express rates to all parts of the globe, if necessary.

Can't you imagine what a pleasure it would be to you to receive a Holiday Box just before Thanksgiving, which would contain a gift card wishing you a Happy Holiday Season and a very Merry Christmas? Particularly if that box were cram-full of tasty, delicious Papershell Pecans?

Pecans: The Perfect Holiday Gift For A More Perfect Holiday Season!

Write for Time-Tested Pecan Recipes Free

Try these with pecans bought from us this season, and enjoy these recipes later with pecans grown in your own yard in years to come from Bass Bred-Up Trees you plant this winter.

PLEASE MAKE YOUR ORDER FOR \$5.00 OR MORE IF POSSIBLE

ORDER BLANK
TO
BASS PECAN COMPANY

Largest Pecan Nursery in the World
LUMBERTON, MISSISSIPPI

All our BRED-UP Pecan Trees are absolutely guaranteed to be true to variety, strong, thrifty, vigorous, fine rooted, well dug, well packed and to reach you in excellent condition, if taken out immediately upon arrival, or we will send you new trees provided complaint is made at once, and a bad order report signed by your Carrying Agent is sent us. Should we be out of any variety ordered we will substitute what we think is as good or better unless you advise us not to substitute when you send in your order.

KIND	Number	Size	Price Each		Price Total	
PECANS Stuart						
Miss. Giant-Mahan						
PEARS Blight Proof Pineapple						
PLUMS Japanese						
PEACHES Red Haven						
Hiley Belle						
Elberta						
FIGS Celeste						
APPLES Red Delicious						
Golden Delicious						
GRAPES Concord (Black)						
Niagara (White)						
50¢ PACKING CHARGE ON ORDERS LESS THAN \$5.00						
TOTAL						

PLEASE WRITE OR PRINT NAME AND ADDRESS PLAINLY

Date _____ 19____

Name _____

Street No. _____ Rural Route _____

Post Office _____

Express Office _____

Date to Ship _____

NEW PRICES—SEASONS 1949-1950

PRICES

PRICES ON TOP GRADE (No. 1) PECAN TREES—ALL VARIETIES

	Each	10 to 100	100 up
1-2 ft.	\$1.15	\$1.00	\$.90
2-3 ft.	1.25	1.15	1.05
3-4 ft.	1.50	1.35	1.25
4-5 ft.	2.00	1.75	1.50
5-6 ft.	2.50	2.25	2.00
6-7 ft.	3.50	3.25	2.75
Large Size	4.00	3.75	3.00
Extra Special Size	5.00	No Reduction.	

Special prices for large quantities.

OUR GUARANTEE

All fruit trees that we do not grow are supplied by reputable Nurseries. We guarantee them to be true to name, high in quality, good healthy stock free from disease. Stock damaged in transit, if notified immediately, will be replaced if express or freight receipt is sent us indicating damage. Should any fruit or pecan trees not prove true to variety we will return the money you paid us for them or replace with other stock, but are not liable for any damage beyond this.

PRICES ON FRUIT TREES

BLIGHT PROOF PINEAPPLE PEARS—	Less Than 10	10 or More
3-4 Feet.....	\$.60 each	\$.50 each
4-5 Feet.....	.75 "	.65 "
5-6 Feet.....	.90 "	.70 "
6-7 Feet.....	1.15 "	1.00 "
• Large Bearing Size.....	1.50 "	1.25 "

PLUMS, PEACHES, FIGS, AND APPLES

3-4 Feet.....	\$.60 each	\$.50 each
4-5 Feet.....	.75 "	.65 "
(SPECIAL: June Bud Peach Trees.....	.40 "	.35 "

GRAPES—CONCORD AND NIAGARA

2 Yr. No. 1.....	\$.35 each	\$.30 each
(Bearing)		

ALL PRICES F.O.B. LUMBERTON, MISSISSIPPI

Methods of Shipment

EXPRESS shipment is made on orders containing trees larger than our 3 to 4 ft. size. We notify you on the day that shipment is made, so that you may be expecting arrival of the trees at your local express office. Shipment is made via express collect, the person receiving the trees to pay the charges thereon. Express shipment is fast and a special rate governs the shipment of nursery stock.

PARCEL POST shipment is made on orders for trees no larger than 3 to 4 feet, if desired. Ten per cent may be added to your order for the postage, and we will prepay them. If the postage should run more than the 10% we take the loss. This service is rapid, and is excellent for RFD customers, since the trees will be delivered to your mailbox.

OTHER methods of shipment can be arranged, if necessary, although the two methods above are most satisfactory in nearly all cases. Motor freight shipment is not satisfactory because of delay at terminal points; and other freight (railroad) is too slow for perishable trees. Air express can be used, but is too expensive for shipments inside the United States.

But no matter how trees are shipped, examine them before accepting them from either the postman or expressman. For if a tree is damaged in transit, and notice is made to the delivery agent, he will mark the damage on your receipt; you send the receipt showing the damage to us, and we can duplicate the shipment (or part that was damaged), and file claim for the value of the damages.

Government Bulletins and Experiment Stations

The United States Government maintains three large experiment stations and laboratories specializing in the culture of pecan trees. These are the U. S. Pecan Experiment Station, Albany, Georgia; U. S. Pecan Experiment Station, RFD No. 6, Meridian, Miss.; and U. S. Pecan Laboratory, Court House Bldg., Shreveport, La. Free government bulletins are also available by writing your Congressman, or the U. S. Department of Agriculture, Washington 25, D. C. Of particular interest are the following:

- No. 700—Pecan Culture
- No. 1501—Nut-Tree Propagation
- No. 1829—Insects and Their Control

Pecan Buds and Grafts For Sale

Thousands of buds and grafts are supplied each year to all sections of the U. S. for propagating young trees either by root grafting, or top budding or grafting. Buds and grafts are selected by experts from our finest young trees and are the finest to be had. The success of any budding or grafting depends on the ability of the operator and the quality of the material used. Poor buds or grafts mean poor results even for the best propagator. Five cents (5¢) per bud or graft, in lots of 25 or more, is the lowest price we can afford to cut back our best trees for. In lots of 500 or more we get 4¢ each, and in lots of 1000 or more 3½¢ each. Such fine varieties as Stuart, Success, and Mississippi Giant are furnished, and in limited quantities we can also supply Lewis, Dependable, Moore, Moneymaker, Forkert, and Davis—all fine varieties.

Letters from Our Customers say:

"Bass Trees are the Finest"

(Names and addresses on request only)

JEMISON, ALA.: "I am happy to be writing to an old reliable nursery. I set out 12 of your Stuart and 2 Success in 1938. They are bearing larger pecans than any around here. Also very prolific. Going to order some more soon." J.N.T.

HELENA, ARK.: "We are feeling very rich with our three splendid pecan trees from your place, giving us abundant and delicious nuts." Mrs. W. W.

DUBLIN, GA.: "I might mention that within the last few years I have bought from you over 500 trees, all of which have been very satisfactory, indeed." F. R. O.

WAYNESBORO, GA.: "I have bought trees from many nurseries, but I wish to say, yours were the best I have ever received." H. R. C.

METAIRIE RIDGE, LA.: "I bought some trees from you in 1929 and got fine results. I sold my place and got double my price for it." J. L.

CANTON, MISS.: "This year I sold an average of \$25.00 worth of pecans per tree from the trees I purchased from you some years ago, after giving several friends a supply and saving enough for home use. Why didn't you knock me down and beat it into me that I could do this." S. R. C.

JACKSON, MISS.: "My pecan trees are fine, will get about 100 lb. per tree this year." J. I. L.

WINTERVILLE, MISS.: "I have one acre of land on which my home is and I have two of your Stuart and one of your Mahan trees put out. Most years I average from \$50.00 to \$75.00 from these trees. Your remark that money grows on trees is really true!" Mrs. I. E. B.

ALAMAGORDO, NEW MEXICO: "From the first shipment of trees we received from you we got 365 lbs. of very fine nuts last year. One of these trees is now eight years old and has a spread of 32 feet. We are working here under conditions that at times make it look impossible—high altitude, Dobe soil with plenty of Alkali, very little rainfall, but so far we have had very good luck." P. H. S.

CHARLOTTE, N. C.: "Some twelve or fifteen years ago while I was Superintendent of the Cabarrus Cotton Mills, Kannapolis, N. C., I bought quite a number of pecan trees from you and put them out around our mill. I think about 200 trees in all. They are beautiful trees now and I understand bearing well. I consider your trees superior to any that I know

about." C. M. P.

GIBSON, N. C.: "I ordered six trees from you three years ago. This year these trees were loaded with pecans." E. G.

BROKEN BOW, OKLA.: "I received my trees today and they look good. I sure thank you for packing them so good. I have never seen trees grow as fast as your trees do." M. R. P.

OKLAHOMA CITY, OKLA.: "Our customers have noticed what fast growers your Miss. Giant trees are. They are the finest bearing trees in this state." M. B.

TULSA, OKLA.: "Just a note to tell you the pecan trees arrived in excellent shape and I am very much pleased with the choice trees sent me. The man who helped me set them out is quite experienced in the field, and he made the remark, "They are the best rooted trees I have ever seen." I thought you would be glad to know how pleased we were." R. A. H.

NESMITH, S. C.: "I am very happy to say that my trees that I have bought from you are fine ones, and I would not take any price for them now." C. M. H.

MEMPHIS, TENN.: "I have you to thank for the wonderful pecan grove which I have, and this year the trees are so heavily loaded that I am afraid their beauty is going to be marred because of this." W. B. W.

HOUSTON, TEXAS.: "Everything you shipped arrived in first class condition. We find you are very modest in describing your trees. These were the nicest and largest in diameter that we have purchased. We received some nice compliments from our customers, who were all more than pleased with their trees." W. B. W.

SAN ANTONIO, TEXAS.: "Received shipment of pecan trees today. They are a fine lot of trees and the roots are wonderful. It pays to do business where business can be depended on and get good quality trees . . ." W. H. S.

WAVERLY, VA.: "I have been selling nursery stock for 23 years and you have the best pecans I have ever seen." C. H. S.

POQUOSON, VA.: "I have a number of your trees that have been bearing for ten years, and are the finest pecans I ever saw." L. L. M.



\$1000.00 per acre Bass Pecan Orchard on a beautiful highway—
Pecans, shade, beauty, long life and great profit combined.

BASS PECAN COMPANY

Largest growers of pecan trees in the world
LUMBERTON, MISS.